



Jumping Jack 2007

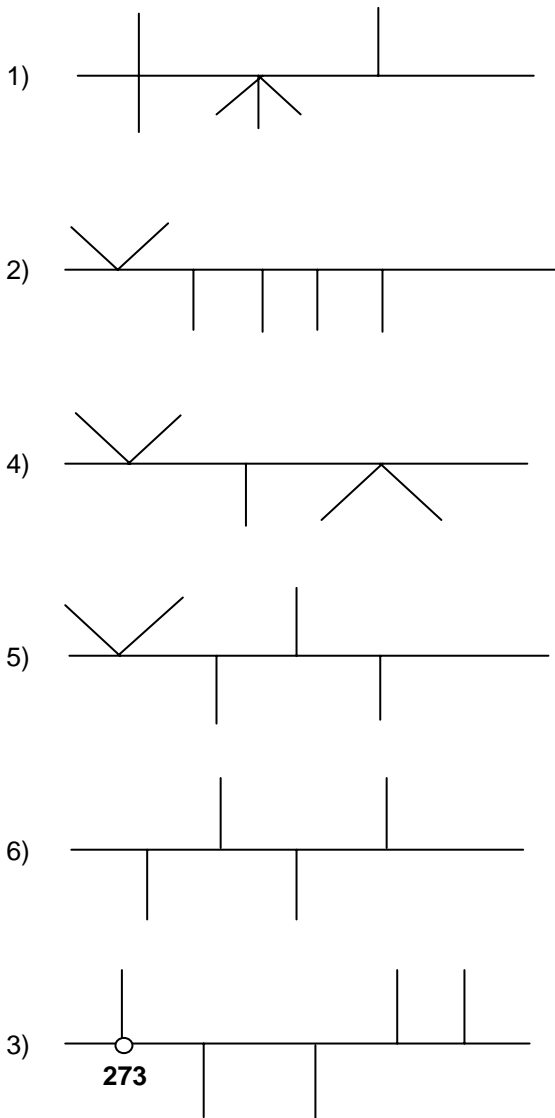
Classes 1+2

TCA SW 229½ 724¼ NE

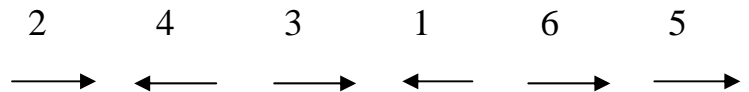
9.0 Miles

TCB S 248 785¾

30 m.p.h.



Use herringbones in the following order and corresponding direction:



Stops and give ways:

241 738	242 745	224¾ 764½	249¼ 739	255 732¾
237¼ 722	254½ 732¼	250½ 731¾	239½ 778½	234½ 778½



Jumping Jack 2007

Classes 1+2

TCB S 248 785³/₄

6.5 Miles

TCC SSE 235³/₄ 822³/₄

30 m.p.h.

First, cross SH184 to get to the A52

Now, cross one of these references, avoid the other:

248789

252787

Then pass through both:

258786 and 260784¹/₂

Now, cross one of these, avoid the other:

258779¹/₄

263779¹/₂

Then go through:

262³/₄782¹/₂

Followed by:

263¹/₂785

Now approach 267 ¹/₂ 787 ¹/₄ from SW on a 'Path or track', depart NW on a yellow road

Now through these spot heights:

209176176

Avoid SH175

Then use only yellow roads to get to 238811

From there, drive straight to TCC

Stops and give ways:

248 786¹/₂ 264¹/₄ 785³/₄ 237 813 267¹/₂ 787¹/₄ 259³/₄ 779¹/₂



Jumping Jack 2007

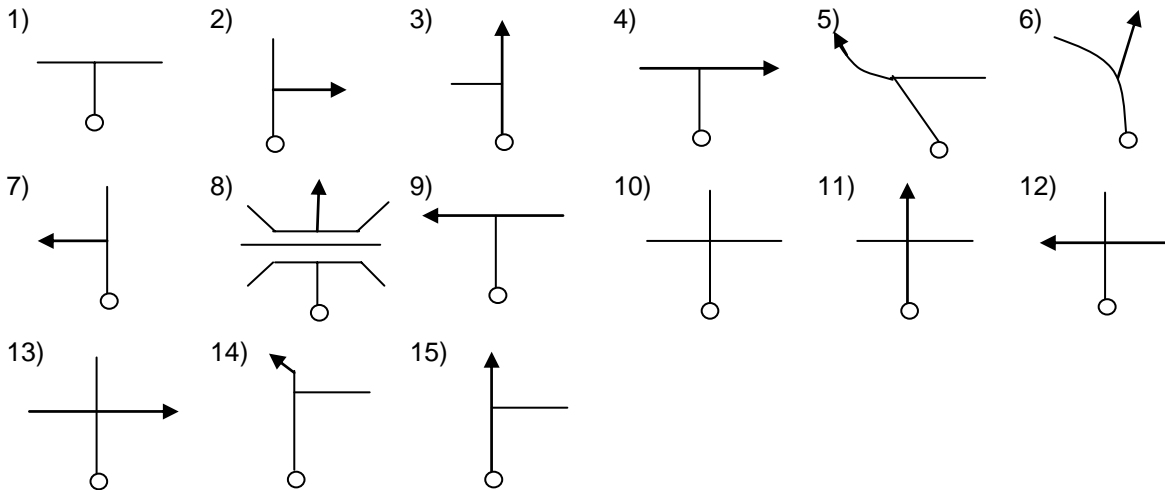
Classes 1+2

TCC SSE 235³/₄ 822³/₄

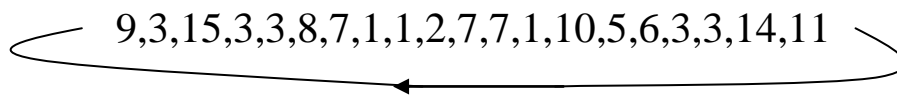
7.5 Miles

TCD W 187 826

30 m.p.h.



Use these tulips in the order indicated by the number line. You'll need to figure out where it starts.



To make things trickier, the shape of the tulips has been simplified, apart from 5, 6 and 14.

Clue 1: the last junction before TCD is a 7.

Clue 2: on tulip 8, the road going over the bridge is the B39.

Stops and give ways:

207³/₄ 840¹/₄

238¹/₄ 839¹/₂

235¹/₄ 823¹/₂

252 845

243 828



Jumping Jack 2007

Classes 1+2

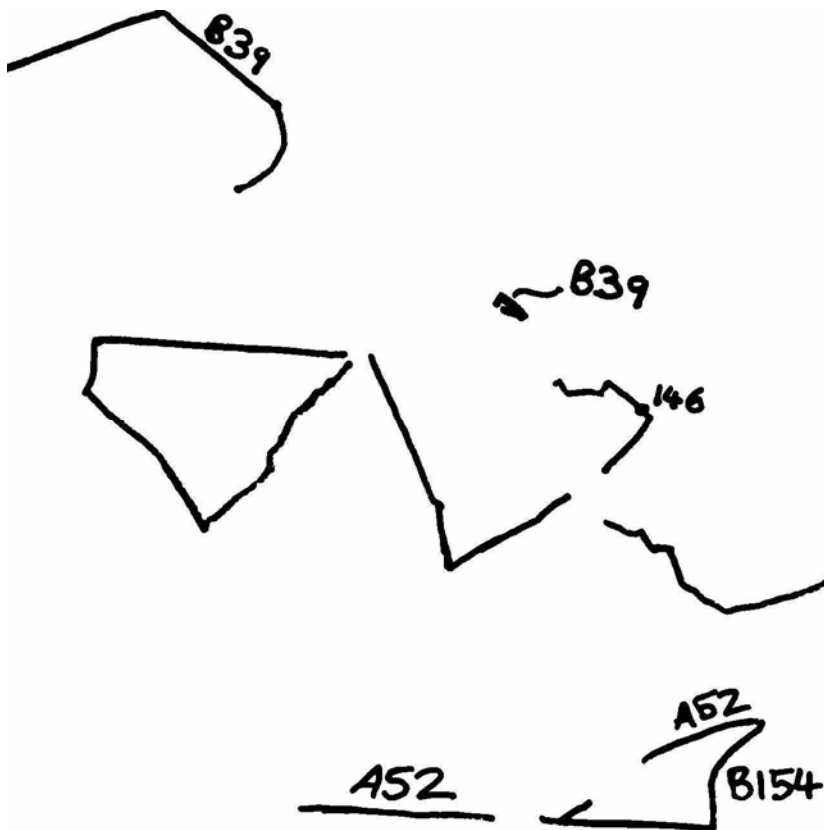
TCD W 187 826

7.5 Miles

TCE NE 210¼ 766 SW

30 m.p.h.

Avoid trace. To make it nice and easy, all pieces are in the correct position relative to each other.



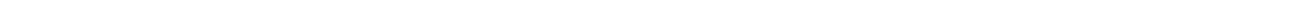
Just to emphasise, you should avoid all the bits of map trace.

Stops and give ways:

231¾ 782¾

212 809

228½ 801½



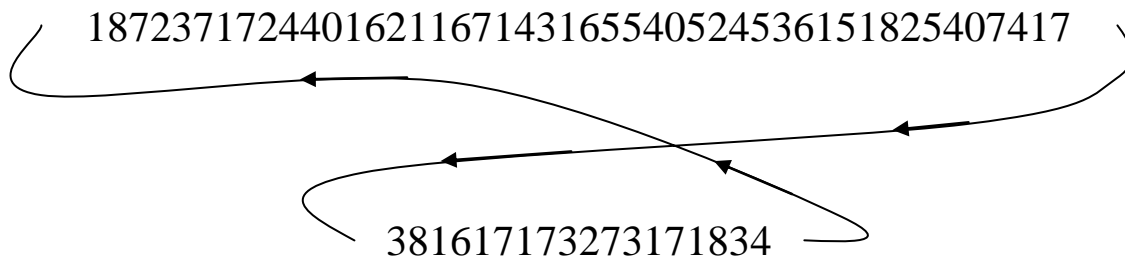


Jumping Jack 2007

Classes 1+2

TCF	ESE 197 749 $\frac{1}{4}$ W	7.5 Miles
TCG	N 148 700 $\frac{1}{4}$ SSW	30 m.p.h

Gridlines and clockface. First cross gridline 19, then use the number line. Clockface are expressed as minutes only, indicating direction of departure, with 12 o'clock as north. Each clockface uses two digits, i.e 5 minutes would be shown as 05. You'll need to figure out where to start.



2440 and 5540 are staggered junctions, each being treated as two junctions. Every junction and every gridline are included.

Stops and give ways:

179 $\frac{1}{2}$ 744 159 707 168 715 $\frac{1}{4}$ 171 $\frac{1}{2}$ 719 $\frac{1}{4}$ 160 $\frac{1}{4}$ 707 $\frac{1}{4}$
165 $\frac{3}{4}$ 735 $\frac{1}{4}$ 171 728 $\frac{1}{2}$

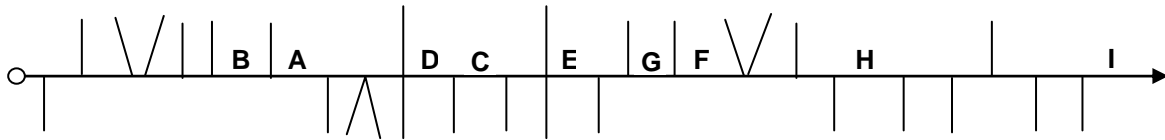


Jumping Jack 2007

Classes 1+2

TCG	N 148 700¼ SSW	7.5 Miles
TCH	NW 088 680 SE	30 m.p.h.

Use this herringbone to find the location of the letters. Then drive through the letters in alphabetical order. The herringbone starts from TCG, departing SSW.



Please try to avoid making excessive noise on the approach to TCH.

Thank you.

Stops and give ways:

146 697¾ 110 705¼ 132¼ 689¾ 138½ 691¾ 119 712



Jumping Jack 2007

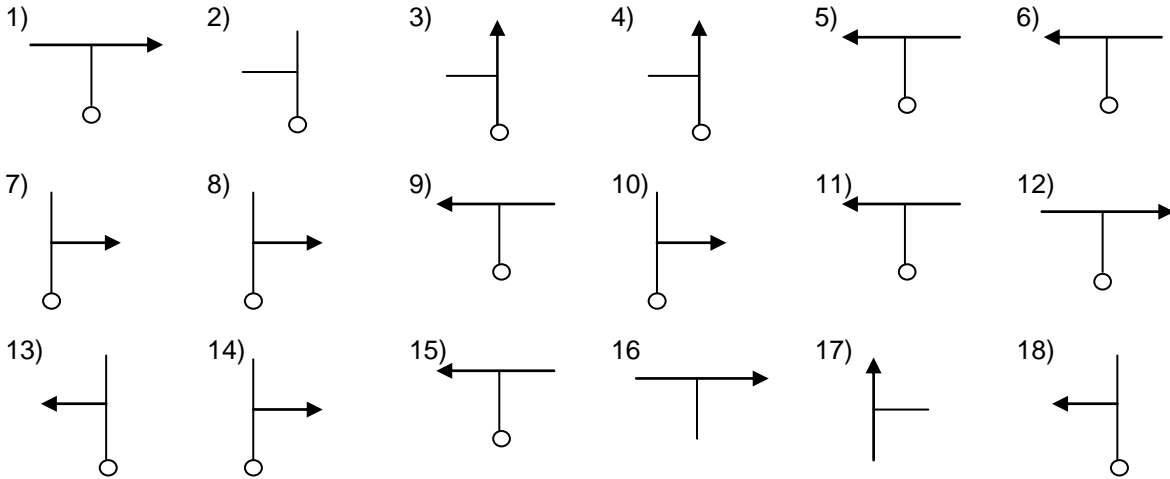
Classes 1+2

TCH NW 088 680 SE

9 Miles

TCI WSW 133 659¼

30 m.p.h.



These tulips, in numerical order, will take you from TCI to TCH

Stops and give ways:

091¾ 675½

124¼ 666¾

106 660¼

103½ 653¼

104 645¾

088½ 668½

092½ 653½



Jumping Jack 2007

Classes 1+2

TCI	WSW 133 659¼	6.5 Miles
TCJ	NNE 171¾ 670½ SSW	30 m.p.h.

First, pass through one of these references, avoid the other:

138½668 136672

Then through either:

147½672 or 144½672½

WHEN LEAVING THE ORANGE 'B' ROAD, PLEASE DRIVE QUIETLY WHEN APPROACHING AND DEPARTING THIS JUNCTION. THANK YOU.

Now through both:

143677 and 144681

Then avoid all three:

151½684, 148¼685¾ and 142689

Next, go through just one of these three:

155½696 160694 158½691

And finally, go through all three, in the order given:

164¾680¾ 168680 173674

Stops and give ways:

146¾ 672 165¼ 680¾ 157¼ 693¾ 152¼ 692¾ 140¾ 667
145 681¾ 169¾ 679 149½ 685

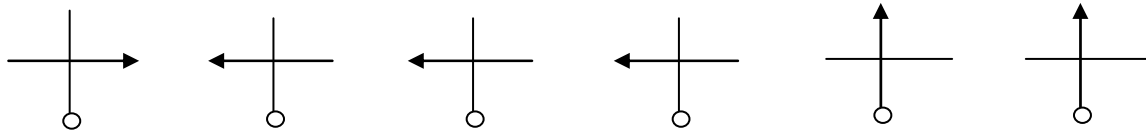


Jumping Jack 2007

Classes 1+2

TCK	W 174½ 652½ E	10 Miles
TCL	S 221¾ 675¼ N	30 m.p.h.

There are 6 crossroads between TCK and TCL, as described by the following tulips, which are not in order. Each is used once.



The rest of the information you need is listed below, but isn't in any particular order:

After the first crossroads of the section, go through SH95

After crossing SH95, go via 'sk' and SH72 to the B104

The A30 takes you from the second crossroads to the third one

At the last crossroads, you should be crossing the A30

Cross SH130 just before the second crossroads, but avoid SH120

At the third crossroads, turn off the A30

After the third crossroads, go through s,+,H,H, then SH51

The fourth crossroads only involves yellow roads, and you should turn left

Approach the fifth crossroads on the B104 and turn left

Stops and give ways:

218¼ 646¼ 222 669¾ 219 649½ 186 650¾ 203 683¼
190½ 661¼ 204 683 216 647 206¾ 657¼

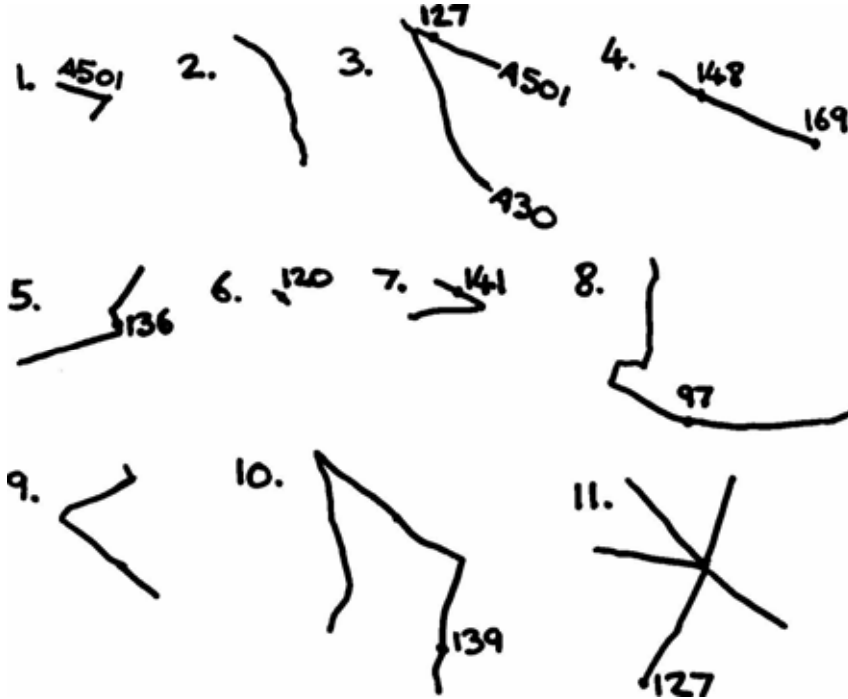


Jumping Jack 2007

Classes 1+2

TCL	S 221 ³ / ₄ 675 ¹ / ₄ N	7.0 Miles
TCM	ESE 188 696 WNW	30 m.p.h.

Here are some bits of trace:



You should avoid:

1,3,5,6,11

And you should use, in no particular order:

2,4,7,8,9,10

Stops and give ways:

217³/₄ 683³/₄ 186 693¹/₂ 199¹/₂ 705 217³/₄ 684 195³/₄ 690

200 693¹/₂

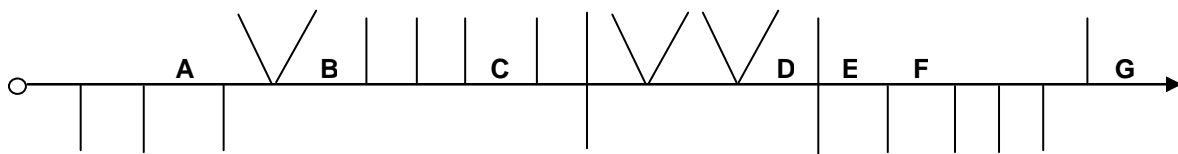


Jumping Jack 2007

Classes 1+2

TCM	ESE 188 696 WNW	3 Miles
TCN	NW 195½ 713 SE	30 m.p.h.

You know the drill, plot the herringbone to find the letters. But this time you should avoid all the letters. The herringbone starts from TCM, departing WNW.



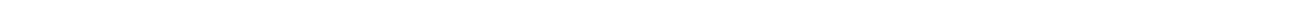
Don't use the B38

Please try to avoid making excessive noise on the approach to TCN.

Thank you.

Stops and give ways:

183¼ 711 186¼ 721





Jumping Jack 2007

Classes 1+2

TCN	NW 195½ 713 SE	4.5 Miles
TCO	WNW 213½ 737½	30 m.p.h.

I wondered what would happen if I wrote really hard instructions for this last section. I reckoned that the first thing you would do would be to plot the location of TCO. Thats fine, I don't mind you knowing where TCO is. I don't even mind that you know which way to approach it. Next, I thought you might look at the Stops and Giveways. Slight problem there, as the correct route only goes through two of the junctions given below (I stole that idea from John Nicholl, of Cookstown Motor Club, thanks John!). So, how can you work out which way to go? Well, the last gridline you should cross before TCO is 21, and thats the only time you should cross it. Also, don't use roads that were used between TCL and TCM. This should be enough to get you to a staggered crossroads at the B38. Now, to go from TCO, back along the correct route, you would use these clockface (in order given) to reach the B38: 4:42, 2:17, 10:36, with 12 o'clock as north, approaching by the hour, departing by the minute.

Stops and give ways (including some which are not on the correct route):

203½ 721½ 202 722 213¾ 736½ 190¼ 734



Jumping Jack 2007

Classes 1+2

TCO	WNW 213½ 737½	1.26 Miles
Finish	223 720½	30 minutes.

0

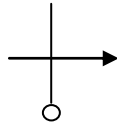
0



TCO

0.02

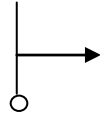
0.02



Give way

1.24

1.26



Into Ballymac