



Jumping Jack 2009

Your entry has been accepted for the Harper Rally Preparations Jumping Jack Rally 2009. You should report for scrutiny between 19:00 and 19:45.

Start/Finish/Scrutiny is at The Ballymac Hotel, Dundrod – Ref 14/223 720½

START TIME	Note: SR 7, Start time has been amended and will now be 8:45pm, from Ballymac Hotel start control. Any competitor not signed on by 8:15pm may be excluded.
MAPS	OSNI 1:50,000 Sheet 14 D Edition 2007, Sheet 15 D Edition 2005 and Sheet 20 D Edition 2006. Approximate boundaries are N85 S62 W08 E28
CARS	Competitors are reminded that for scrutiny, cars must be taxed and carry a warning triangle, have no more than four forward facing beams (H110), be able to pass a sound check C(b)23-24 and carry no advertising (H115).
FUEL	Competitors are advised to have sufficient to last the duration of the event, approximately 90 miles. Nearest petrol stations available before the start are at Glenavy 14/155½ 726, Maghaberry 20/161 622, or Nutt's Corner 14/191½ 786.
TIMING	By watches set to BBC time; times will be advised as 'Standard Time' for each control. Thus each competitor adds his 'Competition Number' to the Standard Time to get his due time. E.g. if standard time at TCF is 21:23 then number 26 is due at 21:49.
NAVIGATION	This will include Map References, Grid Lines, Map Trace, Spot Heights, Herringbone, Clock Face and Tulip Diagrams and variations thereof.
TRIP	A distance of 1.00 miles has been set up between two QUBMC boards. It starts at 222 719 WSW and finishes at WNW 222 712.
REFRESHMENTS	Supper and drinks can be purchased at signing on for the finish venue.
DOCUMENTATION	Classes 1, 2 and 3 competitors will be required to produce: (a) A current club membership card from any ANICC, MI, ESACC or AWSMSC affiliated club for both driver and navigator. (b) An MSA Competition Licence valid for this status of event. Class 4 competitors will be required to produce: (a) A current QUBMC membership card.

On behalf of QUBMC I would like to thank you for your entry and wish you all the best on the night.

Rachel Muldoon, Robert Erwin
Clerks of the Course



Jumping Jack 2009

Start 222³/₄ 721 NW

5.68 miles

TCA S 209¹/₄ 783 N

15 minutes

Non-Competitive Section

0.02	
0.35	
2.55	
4.40	
5.39	
5.68	



Jumping Jack 2009

TCA S 209¼ 783 N

4½ miles

TCB SE 224¼ 808 NW

30mph

Clock Faces:

Approach each junction by the hour hand, leave on the minute hand, taking 12 o'clock as north.

There is no order to these instructions.

8:55

5:10

8:50

7:11

8:26

11:10

5:08

8:55

8:10

There are two crossroads in this section.

Stops and give ways:

212 808½

219 795

208 788



Jumping Jack 2009

TCB SE 224¼ 808 NW

7½ miles

TCC NNW 235½ 822¾ SSE

30mph

Grid squares:

This table shows the number of times you should enter each grid square.

Pass through SE 221½ 813 NNE

1	2	1	1
1	2	1	1
1		1	1
TCB			

Take the shortest route.

Stops and give ways:

249 817½

254½ 819

221½ 812

238 838½

223 812

228½ 833½



Jumping Jack 2009

TCC NNW 235½ 822¾ SSE

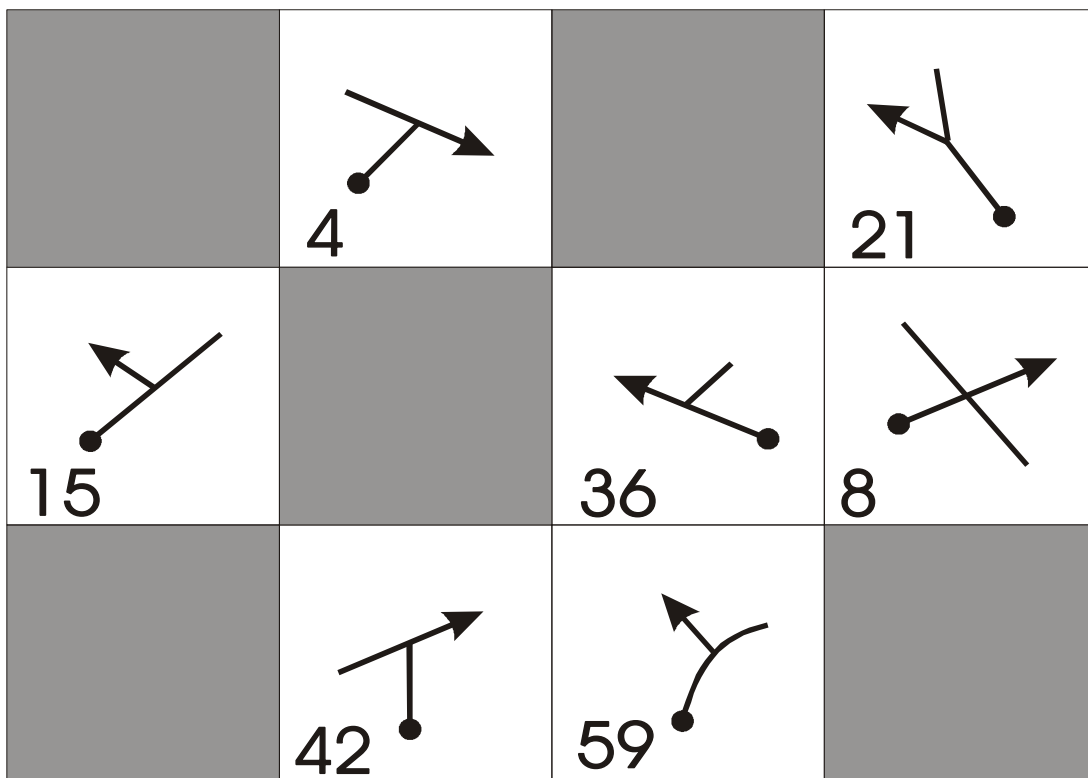
4½ miles

TCD NNW 228¾ 787½ SE

30mph

Tulips:

Follow these tulip diagrams in ascending numerical order to get you from TCD → TCC.



Stops and give ways: 239 814½

250¾ 798½

244½ 795½



Jumping Jack 2009

TCD NNW 228³/₄ 787¹/₂ SE 6¹/₂ miles
TCE ENE 236 736 WSW 30mph

Approach these spot heights from the following directions:

S 165

NE 137

NNE 248

Stops and give ways: 237¹/₂ 776³/₄
231¹/₂ 782¹/₂ 235¹/₂ 775 236³/₄ 778¹/₂
244 751¹/₂ 237 778¹/₂ 242 745



Jumping Jack 2009

TCE ENE 236 736 WSW 7 miles

TCF ESE 224 711½ WNW 30mph

Firstly, leave via these minutes [06 will be shown as 6 etc]

12 o'clock is north

2 8 2 5 1 0 1 2 5 5 5 7 2 0

The hour hand of half past one is south west

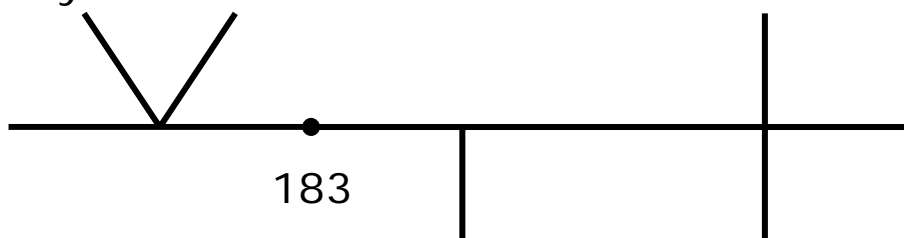
0 2 4 9 3 9 0 2 0 8

Then via spot height 285

And depart successive junctions in these directions:

SW WSW SW SSW

And finally:



Stops and give ways:	231	707½	250¾	732
	235	728½	237¼	722¼



Jumping Jack 2009

TCF ESE 224 711½ WNW

2.64 miles

TCG NNE 232 693 SSW

20 minutes

Competitive Relaxed i

0.56	
1.05	
1.76	
2.52	
2.64	



Jumping Jack 2009

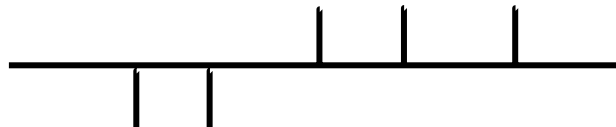
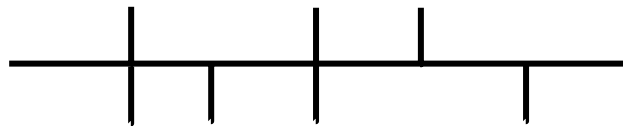
TCG NNE 232 693 SSW

4½ miles

TCH ESE 212 648 WNW

30mph

Herringbone:



Stops and give ways: 217½ 684

206½ 657

228 686¾

220½ 692

214 674½



Jumping Jack 2009

TCH ESE 212 648 WNW 4 miles
TCI SSW 188½ 657½ NNE 30mph

Do not cross grid line 63

2



3 Pass through 1 8 6 0 6 5 1 0

There is an 8-figure grid reference in this number line.

1 2 1 2 0 6 5 6 4 9 3 2 0 6 4

There is an 8-figure grid reference in this number line.

Stops and give ways: 186 643½



Jumping Jack 2009

TCI SSW 188½ 657½ NNE 8½ miles

TCJ SE 187½ 696 NW 30mph

6: 6 6 1 9 7 2 2 0 6 7



7: 1 2 0 2 0 1 9 4 6 8 2 1 9

This line includes 1 six figure grid reference

5: Porters Bridge + Crooked Bridge



4: 6 9 1 9 1 9 1 4 1

Ignore the numbers and plot each instruction in turn, reading top to bottom.

Stops and give ways:	177¾ 667	186 693½
	190½ 661	181 685½



Jumping
Jack 2009

TCJ	SE	187½	696	NW	4 miles
TCK	ENE	165½	714	WSW	30mph

Clock Faces:

Leave via these minutes.

12 o'clock is north

2 4 4 5 0 3 6 3 7 3 8

The spacing of the number line is not correct, but all the digits are.

If you make the one correction necessary, it will define 7 junctions and take you to TC K.

Stops and give ways:	171½ 719	168 715
	183 711	186½ 721



Jumping Jack 2009

TCK ENE 165½ 714 WSW

3.16 miles

TCL SE 127¼ 724 NW

20 minutes

Competitive Relaxed ii

0.44	
0.52	
1.03	
1.09	
2.09	
2.51	
2.82	
3.16	



Jumping Jack 2009

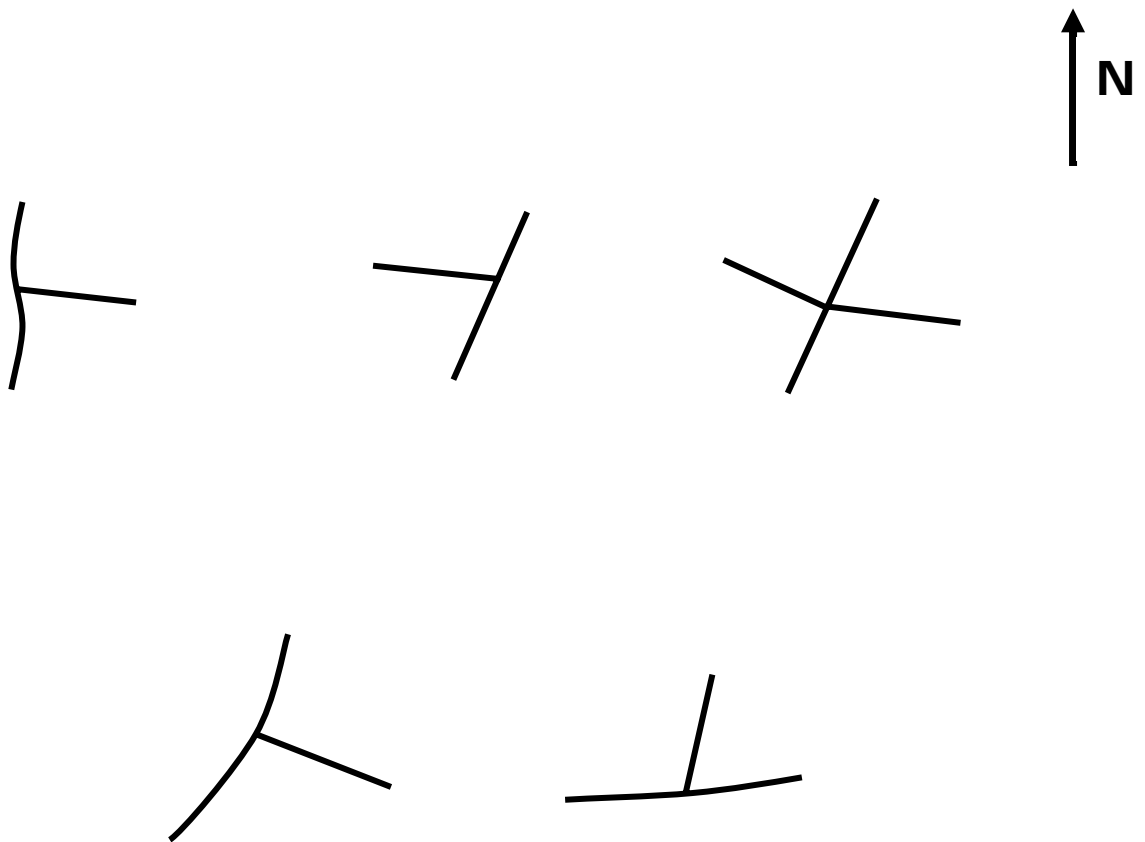
TCL SE 127¼ 724 NW

4½ miles

TCM N 095¾ 695 SE

30mph

Tulips:



Stops and give ways:

119 712

127 715

110 705¼



Jumping Jack 2009

TCN NNE 092 652³/₄ SSW

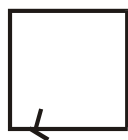
4½ miles

TCO SW 119½ 662 NE

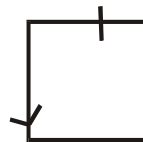
30mph

Grid Squares:

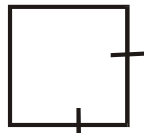
Each successive grid square has been rotated through 90° anti-clockwise.



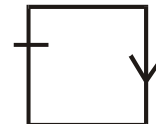
1



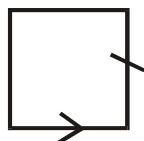
2



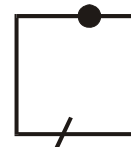
3



4



5



6

Avoid

118 661

Stops and give ways:

103¼ 653½

106 660

104 645½



Jumping Jack 2009

TCO SW 119½ 662 NE 5½ miles
TCP SE 155¼ 677 NNW 30mph

Grid Lines:

Cross the following grid lines, spot heights and map reference in the order given:

1 2 6 6 1 3 6 6 6 7 6 7 6 7 6 7

1 4 6 7 6 7 1 5 1 5 5 6 6 7 6 7

Stops and give ways: 146½ 672 158½ 672
124½ 666½ 141 667



Jumping Jack 2009

TCP SE 155¼ 677 NNW

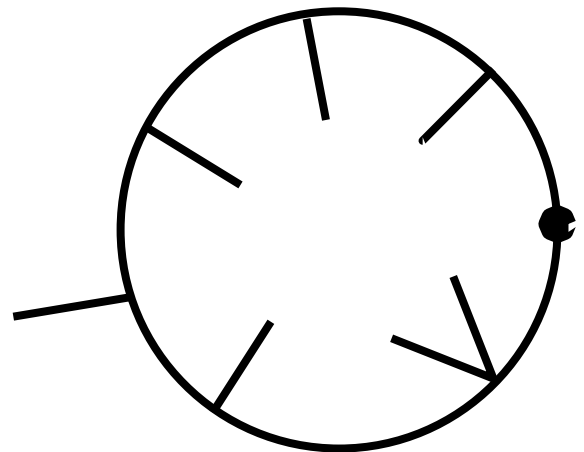
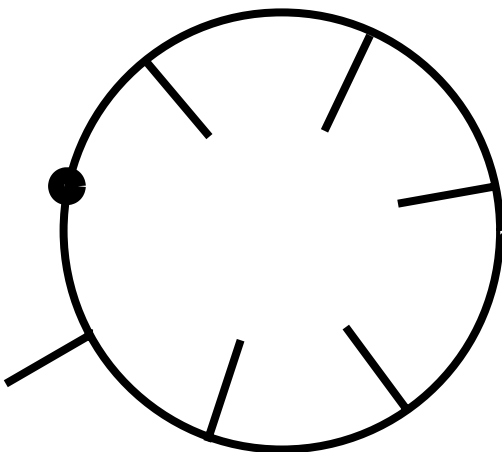
5 miles

TCQ NNW 156 695½ SE

30mph

Circular Herringbones:

One of these herringbones shows the ODD numbered junctions, the other shows the EVEN numbered junctions.



Stops and give ways:

152¼ 709

155¼ 705¼

141½ 699½

153¼ 682½

145¼ 687¼



Jumping Jack 2009

TCQ NNW 156 695½ SE
Finish NW 222¾ 721

8.25 miles
30 minutes

Non-Competitive Section

0.23	
0.75	
2.94	
3.30	
6.69	
7.87	
8.25	