



Jumping Jack 2009

Your entry has been accepted for the Harper Rally Preparations Jumping Jack Rally 2009. You should report for scrutiny between 19:00 and 19:45.

Start/Finish/Scrutiny is at The Ballymac Hotel, Dundrod – Ref 14/223 720½

START TIME	Note: SR 7, Start time has been amended and will now be 8:45pm, from Ballymac Hotel start control. Any competitor not signed on by 8:15pm may be excluded.
MAPS	OSNI 1:50,000 Sheet 14 D Edition 2007, Sheet 15 D Edition 2005 and Sheet 20 D Edition 2006. Approximate boundaries are N85 S62 W08 E28
CARS	Competitors are reminded that for scrutiny, cars must be taxed and carry a warning triangle, have no more than four forward facing beams (H110), be able to pass a sound check C(b)23-24 and carry no advertising (H115).
FUEL	Competitors are advised to have sufficient to last the duration of the event, approximately 90 miles. Nearest petrol stations available before the start are at Glenavy 14/155½ 726, Maghaberry 20/161 622, or Nutt's Corner 14/191½ 786.
TIMING	By watches set to BBC time; times will be advised as 'Standard Time' for each control. Thus each competitor adds his 'Competition Number' to the Standard Time to get his due time. E.g. if standard time at TCF is 21:23 then number 26 is due at 21:49.
NAVIGATION	This will include Map References, Grid Lines, Map Trace, Spot Heights, Herringbone, Clock Face and Tulip Diagrams and variations thereof.
TRIP	A distance of 1.00 miles has been set up between two QUBMC boards. It starts at 222 719 WSW and finishes at WNW 222 712.
REFRESHMENTS	Supper and drinks can be purchased at signing on for the finish venue.
DOCUMENTATION	Classes 1, 2 and 3 competitors will be required to produce: (a) A current club membership card from any ANICC, MI, ESACC or AWSMSC affiliated club for both driver and navigator. (b) An MSA Competition Licence valid for this status of event. Class 4 competitors will be required to produce: (a) A current QUBMC membership card.

On behalf of QUBMC I would like to thank you for your entry and wish you all the best on the night.

Rachel Muldoon, Robert Erwin
Clerks of the Course



Jumping Jack 2009

Start 222³/₄ 721 NW

5.68 miles

TCA S 209¹/₄ 783 N

15 minutes

Non-Competitive Section

0.02	
0.35	
2.55	
4.40	
5.39	
5.68	



Jumping
Jack 2009

TCA S 209¼ 783 N

4½ miles

TCB SE 224¼ 808 NW

30 mph

Clock Faces:

Approach each junction by the hour hand, leave on the minute hand, taking 12 o'clock as north.

Read from left to right, then top to bottom.

5:10

8:55

5:08

7:11

8:26

11:10

8:10

8:55

8:50

The third and fourth junctions, and no others, are crossroads.

Stops and give ways:

208 788

212 808½

219 795



Jumping Jack 2009

TCB SE 224¼ 808 NW

7½ miles

TCC NNW 235½ 822¾ SSE

30mph

Map References:

- ① SE 221½ 813 NNE
- ② SSE 228¾ 832½ NNW
- ③ NW 240 833 SE
- ④ N 253¼ 822½ S
- ⑤ NE 240 826 SW

Stops and give ways:

221½ 812

223 812

228½ 833½

238 838½

254½ 819

249 817½

TCC NNW 235½ 822¾ SSE

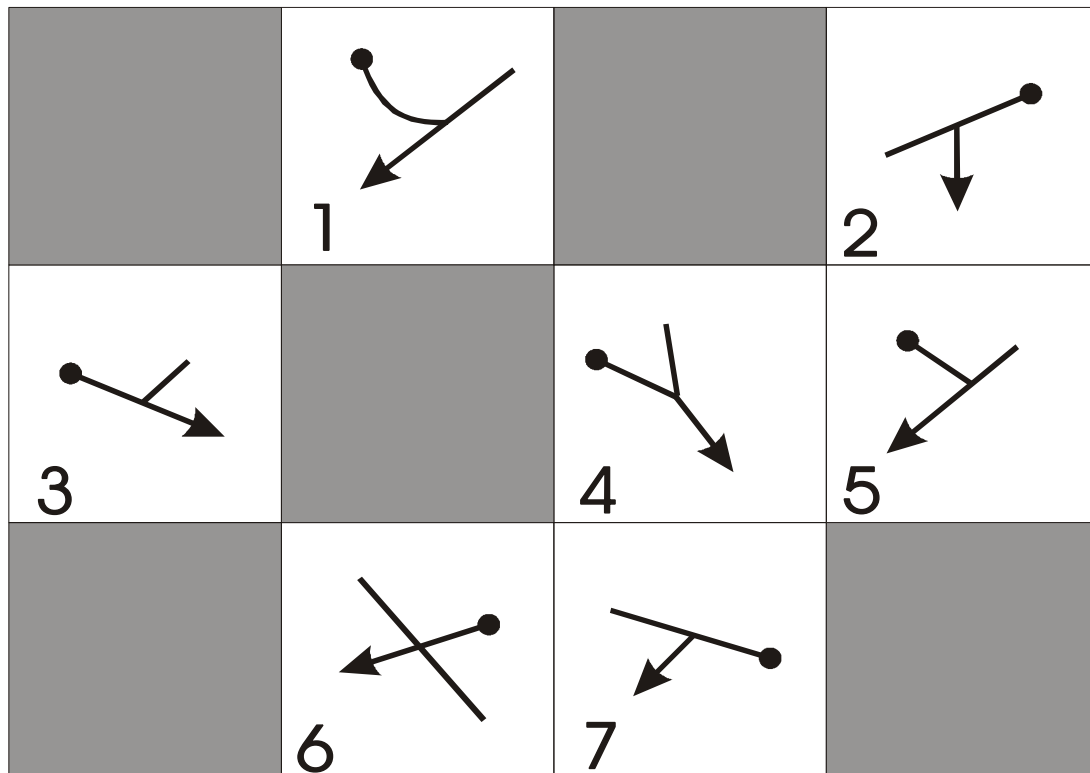
4½ miles

TCD NNW 228¾ 787½ SE

30mph

Tulips:

Follow these tulip diagrams in ascending numerical order to get you from TCC → TCD.



Stops and give ways:

239 814½

250¾ 798½

244½ 795½



TCD NNW 228³/₄ 787¹/₂ SE

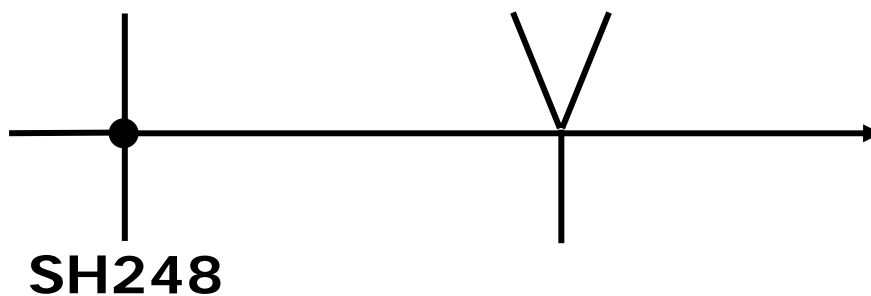
6¹/₂ miles

TCE ENE 236 736 WSW

30mph

The following instructions, used in order, will bring you from TCD to TCE:

1. Pass under an Electricity Transmission Line while on a green road
2. Get close to grid line 24 but do not cross it (although you will cross 24 later in this section).
3. Approach spot height 165 from S.
4. Go through spot height 137 then pass over grid lines 23 76 24 75
5. And finally, a herringbone:



Stops and give ways:

237 778¹/₂

237¹/₂ 776³/₄

231¹/₂ 782¹/₂

236³/₄ 778¹/₂

235¹/₂ 775

244 751¹/₂

242 745



Jumping
Jack 2009

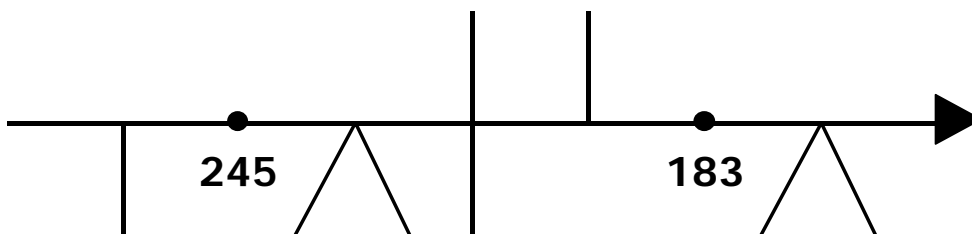
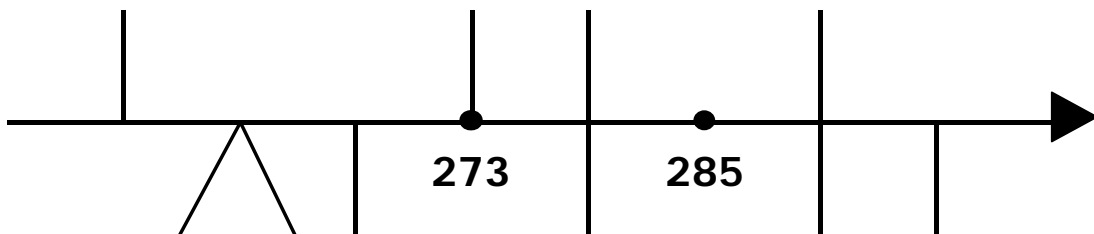
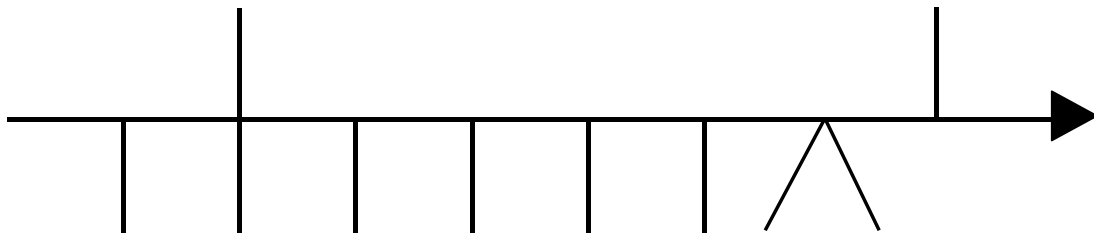
TCE ENE 236 736 WSW

7 miles

TCF ESE 224 711½ WNW

30mph

Herringbone



Stops and give ways:

231 707½

250¾ 732

235 728½

237¼ 722¼



Jumping Jack 2009

TCF ESE 224 711½ WNW

2.64 miles

TCG NNE 232 693 SSW

20 minutes

Competitive Relaxed i

0.56	
1.05	
1.76	
2.52	
2.64	



Jumping Jack 2009

TCG NNE 232 693 SSW

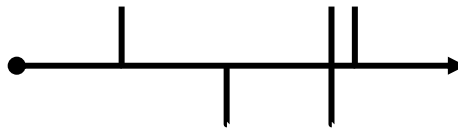
4½ miles

TCH ESE 212 648 WNW

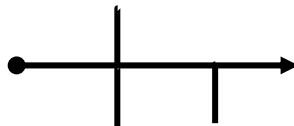
30mph

Herringbone:

1



2



3

via N 216 646¾ WNW

Stops and give ways:

228 686¾

220½ 692

217½ 684

214 674½

214½ 653



Jumping Jack 2009

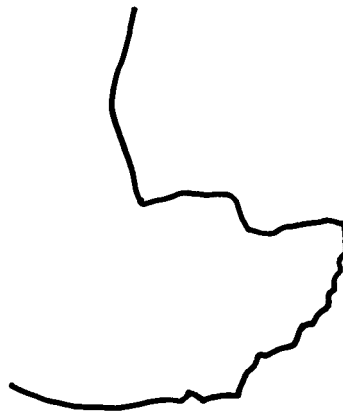
TCH ESE 212 648 WNW

4 miles

TCI SSW 188½ 657½ NNE

30mph

Trace



Stops and give ways: 186 643½



Jumping
Jack 2009

TCI SSW 188½ 657½ NNE 8½ miles

TCJ SE 187½ 696 NW 30mph

1, 3, 5, 8: Grid Lines and Spot Heights

2, 4: Map References

1: 6 6 1 9 7 2 2 0 6 7 2 0

2: 1 9 7 ¼ 6 7 3 2 0 2 6 8 1 ½

3: 1 2 0 2 0

4: 1 9 4 6 8 2

5: 1 9

6: Pass over Porters Bridge, over and under a railway

track, and over the Ballinderry River for a second time.

7: 

8: 6 9 1 9 1 9 1 4 1

Stops and give ways: 190½ 661 203 683½

177¾ 667 181 685½ 186 693½



Jumping Jack 2009

TCJ SE 187½ 696 NW

5.32 miles

TCL SE 127¼ 724 NW

28 minutes

Competitive Relaxed ii

0.20	
1.04	
2.04	
2.60	
2.68	
3.19	
3.25	
4.25	
4.67	
4.98	
5.32	



Jumping Jack 2009

TCL SE 127¼ 724 NW

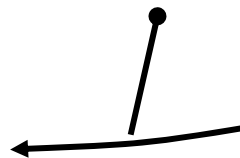
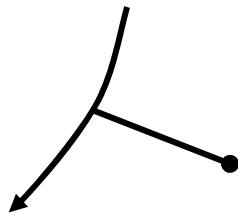
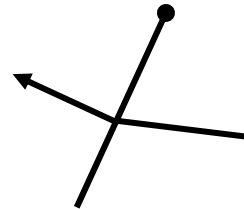
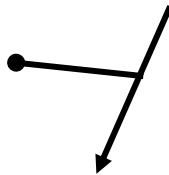
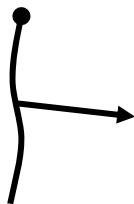
4½ miles

TCM N 095¾ 695 SE

30mph

Tulips:

Read from left to right, top to bottom.



Stops and give ways:

127 715

119 712

110 705¼



Jumping
Jack 2009

TCM N 095³/₄ 695 SE 5½ miles
TCN NNE 092 652³/₄ SSW 30mph

Clock Faces:

Approach each junction by the hour hand, leave on the minute hand, taking 12 o'clock as north.

Read from left to right, then top to bottom.

11:23	11:10	14:33	2:15
5:38	2:38	14:17	9:31
1:47	15:37	3:31	10:35

A hint: As 12 o'clock is north, ignore the hour hand approaches and just plot the departures by reading the minutes.

A second hint: Hurry up! It gets a bit bumpy.

Stops and give ways: 100 685 095½ 679
097½ 666 088¼ 668¼ 092½ 653¼



Jumping
Jack 2009

TCN NNE 092 652³/₄ SSW

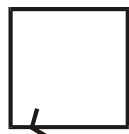
4½ miles

TCO SW 119½ 662 NE

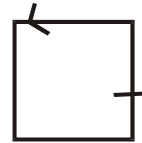
30mph

Grid Squares:

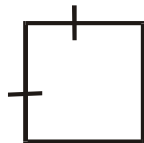
Each square shows how you should enter and leave each grid square in turn.



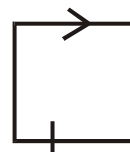
1



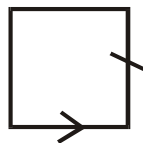
2



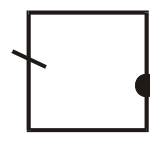
3



4



5



6

Stops and give ways:

104 645½

103¼ 653½

106 660



Jumping
Jack 2009

TCO SW 119½ 662 NE

5½ miles

TCP SE 155¼ 677 NNW

30mph

Grid Lines and Spot Heights:

Cross the following grid lines, spot heights and map references in the order given:

1 2 6 6 1 3 6 6

6 7 6 7 6 7 6 7

via 138 668 SE

1 4 6 7 6 7 1 5

via 155¼ 667 SE

6 7

Stops and give ways:

124½ 666½

141 667


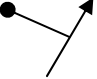




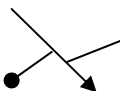
146½ 672

158½ 672

TCP SE 155¼ 677 NNW
Finish NW 222¾ 721

9.92 miles
40 minutes

Non-Competitive Section

0.41	
1.18	
1.31	
4.61	
4.97	
8.36	
9.54	
9.92	