

McAleer's

SPAR

There for you

HOT FOOD • GROCERIES • FORECOURT • OFF-LICENCE • ATM • TYRES • CAR WASH

THE ENERGIA NORTHERN IRELAND NAVIGATION RALLY CHAMPIONSHIP 2009



ENNISKILLEN MOTOR CLUB LTD

ERNE SAFARI NAVIGATION RALLY 6 MARCH 2009

energia

ROUTE INSTRUCTION 1

CLASSES 1, 2, 3 & 4

From Control TC Start
To Control TC A

18/24455860 WSW
WNW 27255850 SE

Length: 2.57 miles
Non competitive

Average speed: - mph
Time allowed: 15 minutes

<u>Interval mileage</u>	<u>Total mileage</u>		
0.00	0.00		Exit service station (caution, 40mph)
0.04	0.04		National speed limit
0.74	0.78		SP Trillick
1.79	2.57		TC A (park well into LHS while waiting)

Drew Wilson

Clerk of the Course

Event emergency telephone number
078 707 40915

frizzante offsales

PREMIER TYRE
& WASH BAY

QUALITY
SERVICE
ASSURED

DRUMHARVEY SERVICE STATION

Dromore Road, Irvinestown, County Fermanagh. BT94 1ET.

Tel. (028) 6862 1226 | Fax. (028) 6862 8385 | Tyre/Carwash Dept. 0796 8806 664



McAleer's

SPAR

There for you

HOT FOOD • GROCERIES • FORECOURT • OFF-LICENCE • ATM • TYRES • CAR WASH

THE ENERGIA NORTHERN IRELAND NAVIGATION RALLY CHAMPIONSHIP 2009



ENNISKILLEN MOTOR CLUB LTD

ERNE SAFARI NAVIGATION RALLY 6 MARCH 2009

energia

ROUTE INSTRUCTION 2

CLASSES 3 & 4

From Control TC A WNW 27255850 SE

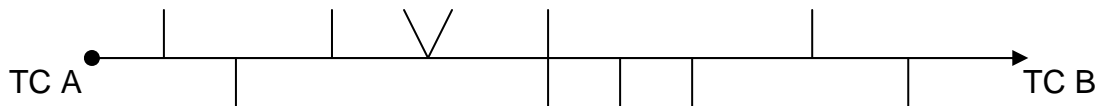
To Control TC B SE 30325668 NNW

Length: 4.0 miles

Competitive section

Average speed: 30mph

Time allowed: 8 minutes



Stop and give ways which you may visit in this section (not in order):

29655767

29155822

30105603

Drew Wilson

Clerk of the Course

Event emergency telephone number
078 707 40915

frizzante offsales

PREMIERTYRE
& WASH BAY

QUALITY
SERVICE
ASSURED

DRUMHARVEY SERVICE STATION

Dromore Road, Irvinestown, County Fermanagh. BT94 1ET.

Tel. (028) 6862 1226 | Fax. (028) 6862 8385 | Tyre/Carwash Dept. 0796 8806 664



McAleer's

SPAR

There for you

HOT FOOD • GROCERIES • FORECOURT • OFF-LICENCE • ATM • TYRES • CAR WASH

THE ENERGIA NORTHERN IRELAND NAVIGATION RALLY CHAMPIONSHIP 2009



ENNISKILLEN MOTOR CLUB LTD

ERNE SAFARI NAVIGATION RALLY 6 MARCH 2009

energia

ROUTE INSTRUCTION 3

CLASSES 3 & 4

From Control TC B SE 30325668 NNW
To Control TC C SSW 34015785 NNE

Length: 5.0 miles
Competitive section

Average speed: 30mph
Time allowed: 10 minutes

In order map references:

1 WNW 30095710 ESE

2 NW 32505813 SE

Stop and give ways which you may visit in this section (not in order):

30095710

31735694

29675709

Drew Wilson

Clerk of the Course

Event emergency telephone number
078 707 40915

frizzante offsales

PREMIERTYRE
& WASH BAY

QUALITY
SERVICE
ASSURED

DRUMHARVEY SERVICE STATION

Dromore Road, Irvinestown, County Fermanagh. BT94 1ET.

Tel. (028) 6862 1226 | Fax. (028) 6862 8385 | Tyre/Carwash Dept. 0796 8806 664



McAleer's

SPAR 

There for you

HOT FOOD • GROCERIES • FORECOURT • OFF-LICENCE • ATM • TYRES • CAR WASH

THE ENERGIA NORTHERN IRELAND NAVIGATION RALLY CHAMPIONSHIP 2009



ENNISKILLEN MOTOR CLUB LTD

ERNE SAFARI NAVIGATION RALLY 6 MARCH 2009

energia

ROUTE INSTRUCTION 4

CLASSES 3 & 4

From Control TC C SSW 34015785 NNE
To Control TC D NNW 38155557 SSE

Length: 4.50 miles
Competitive section

Average speed: 30 mph
Time allowed: 9 minutes

Grid lines, reading left to right

58 58 35 36 58 58 37 57 56 38

Stop and give ways which you may visit in this section:

35485712

34315815

Drew Wilson

Clerk of the Course

Event emergency telephone number
078 707 40915

frizzante offsales

PREMIERTYRE
& WASH BAY

QUALITY
SERVICE
ASSURED

DRUMHARVEY SERVICE STATION

Dromore Road, Irvinestown, County Fermanagh. BT94 1ET.

Tel. (028) 6862 1226 | Fax. (028) 6862 8385 | Tyre/Carwash Dept. 0796 8806 664



McAleer's

SPAR 

There for you

HOT FOOD • GROCERIES • FORECOURT • OFF-LICENCE • ATM • TYRES • CAR WASH

THE ENERGIA NORTHERN IRELAND NAVIGATION RALLY CHAMPIONSHIP 2009



ENNISKILLEN MOTOR CLUB LTD

ERNE SAFARI NAVIGATION RALLY 6 MARCH 2009

energia

ROUTE INSTRUCTION 5

CLASSES 3 & 4

From Control TC D NNW 38155557 SSE
To Control TC E ESE 39445251 WNW

Length: 4.0 miles
Competitive section

Average speed: 30mph
Time allowed: 8 minutes

Use the following information in alphabetical order

- A Take first road on right
- B Go through spot height 195
- C Use the dotted road from 38415522 to 39645509
- D Cross gridline 55 three times

Stop and give ways (not in order) which you may visit in this section:

39635508

38145530

40405470

Drew Wilson

Clerk of the Course

Event emergency telephone number
078 707 40915

frizzante offsales

PREMIERTYRE
& WASH BAY

QUALITY
SERVICE
ASSURED

DRUMHARVEY SERVICE STATION

Dromore Road, Irvinestown, County Fermanagh. BT94 1ET.

Tel. (028) 6862 1226 | Fax. (028) 6862 8385 | Tyre/Carwash Dept. 0796 8806 664



McAleer's

SPAR

There for you

HOT FOOD • GROCERIES • FORECOURT • OFF-LICENCE • ATM • TYRES • CAR WASH

THE ENERGIA NORTHERN IRELAND NAVIGATION RALLY CHAMPIONSHIP 2009



ENNISKILLEN MOTOR CLUB LTD

ERNE SAFARI NAVIGATION RALLY 6 MARCH 2009

energia

ROUTE INSTRUCTION 6

CLASSES 3 & 4

From Control TC E ESE 39445251 WNW
To Control TC F ESE 36605385 WNW

Length: 5.50 miles
Competitive section

Average speed: 30mph
Time allowed: 11 minutes

- 1 Go through spot heights which when added together = 398
- 2 Do not go through grid reference 37325270

Stop and give ways (not in order) which you may visit in this section:

39035278

36805380

Drew Wilson

Clerk of the Course

Event emergency telephone number
078 707 40915

frizzante offsales

PREMIERTYRE
& WASH BAY

QUALITY
SERVICE
ASSURED

DRUMHARVEY SERVICE STATION

Dromore Road, Irvinestown, County Fermanagh. BT94 1ET.

Tel. (028) 6862 1226 | Fax. (028) 6862 8385 | Tyre/Carwash Dept. 0796 8806 664



THE ENERGIA NORTHERN IRELAND NAVIGATION RALLY CHAMPIONSHIP 2009



ENNISKILLEN MOTOR CLUB LTD

ERNE SAFARI NAVIGATION RALLY 6 MARCH 2009

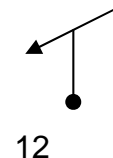
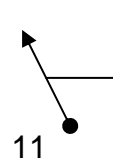
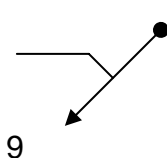
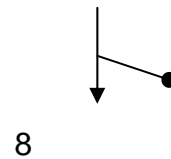
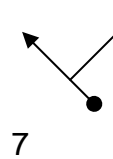
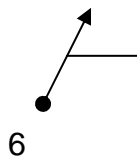
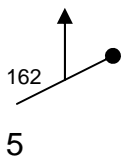
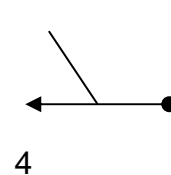
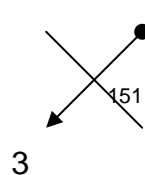
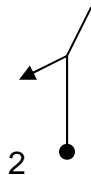
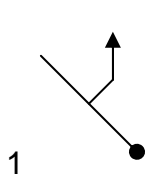
energia

ROUTE INSTRUCTION 7

CLASSES 3 & 4

From Control TC F ESE 36605385 WNW
To Control TC G NNE 31395424 SSWLength: 5.50 miles
Competitive sectionAverage speed: 30mph
Time allowed: 11 minutes

Tulip diagrams



Stop and give ways which you may visit in this section:

33275535 32625443 36235469 32385512

Drew Wilson**Clerk of the Course**Event emergency telephone number
078 707 40915

McAleer's

SPAR 

There for you

HOT FOOD • GROCERIES • FORECOURT • OFF-LICENCE • ATM • TYRES • CAR WASH

THE ENERGIA NORTHERN IRELAND NAVIGATION RALLY CHAMPIONSHIP 2009



ENNISKILLEN MOTOR CLUB LTD

ERNE SAFARI NAVIGATION RALLY 6 MARCH 2009

energia

ROUTE INSTRUCTION 8

CLASSES 3 & 4

From Control TC G NNE 31395424 SSW
To Control TC H E 27285530 W

Length: 5.0 miles
Competitive section

Average speed: 30mph
Time allowed: 10 minutes

- 1 Go through grid square 3152
- 2 Do not go through grid square 2952
- 3 Avoid spot height 86
- 4 Cross over Magheralough Bridge

Stop and give ways (not in order) which you may visit in this section:

29165409

31045346

28105372

Drew Wilson

Clerk of the Course

Event emergency telephone number
078 707 40915

frizzante offsales

PREMIERTYRE
& WASH BAY

QUALITY
SERVICE
ASSURED

DRUMHARVEY SERVICE STATION

Dromore Road, Irvinestown, County Fermanagh. BT94 1ET.

Tel. (028) 6862 1226 | Fax. (028) 6862 8385 | Tyre/Carwash Dept. 0796 8806 664



McAleer's

SPAR

There for you

HOT FOOD • GROCERIES • FORECOURT • OFF-LICENCE • ATM • TYRES • CAR WASH

THE ENERGIA NORTHERN IRELAND NAVIGATION RALLY CHAMPIONSHIP 2009



ENNISKILLEN MOTOR CLUB LTD

ERNE SAFARI NAVIGATION RALLY 6 MARCH 2009

energia

ROUTE INSTRUCTIONS 9

CLASSES 3 & 4

From Control TC H E 27285530 W
To Control TC I W 31635695 E

Length: 4.50 miles
Competitive section

Average speed: 30mph
Time allowed: 9 minutes

Clockface – depart each junction by the following minutes with 12 o'clock as due North

1	5
2	8
3	3
4	13
5	16
6	3
7	0
8	25
9	14
10	2
11	13

Stop and give ways (not in order) which you may visit in this section:

30105603 27545565 30165688 30495644 31225682

Drew Wilson

Clerk of the Course

Event emergency telephone number
078 707 40915

frizzante offsales

PREMIERTYRE
& WASH BAY

QUALITY
SERVICE
ASSURED

DRUMHARVEY SERVICE STATION

Dromore Road, Irvinestown, County Fermanagh. BT94 1ET.

Tel. (028) 6862 1226 | Fax. (028) 6862 8385 | Tyre/Carwash Dept. 0796 8806 664



McAleer's

SPAR 

There for you

HOT FOOD • GROCERIES • FORECOURT • OFF-LICENCE • ATM • TYRES • CAR WASH

THE ENERGIA NORTHERN IRELAND NAVIGATION RALLY CHAMPIONSHIP 2009



ENNISKILLEN MOTOR CLUB LTD

ERNE SAFARI NAVIGATION RALLY 6 MARCH 2009

energia

ROUTE INSTRUCTION 10

CLASSES 3 & 4

From Control TC I W 31635695 E
To Control TC J NE 30005783 SW

Length: 4.0 miles
Competitive section

Average speed: 30mph
Time allowed: 8 minutes

To get to TC J, just go the shortest route, using the road through
'Shanmullagh East'

Stop and give ways (not in order) which you may visit in this section:

32505813 31735694 32525930 31325941

Drew Wilson

Clerk of the Course

Event emergency telephone number
078 707 40915

frizzante offsales

PREMIERTYRE
& WASH BAY

QUALITY
SERVICE
ASSURED

DRUMHARVEY SERVICE STATION

Dromore Road, Irvinestown, County Fermanagh. BT94 1ET.

Tel. (028) 6862 1226 | Fax. (028) 6862 8385 | Tyre/Carwash Dept. 0796 8806 664



McAleer's

SPAR 

There for you

HOT FOOD • GROCERIES • FORECOURT • OFF-LICENCE • ATM • TYRES • CAR WASH

THE ENERGIA NORTHERN IRELAND NAVIGATION RALLY CHAMPIONSHIP 2009



ENNISKILLEN MOTOR CLUB LTD

ERNE SAFARI NAVIGATION RALLY 6 MARCH 2009

energia

ROUTE INSTRUCTION 11

CLASSES 3 & 4

From Control TC J NE 30005783 SW
To Control TC K NE 25285900 SW

Length: 7.50 miles
Regularity section

Average speed: 30mph
Time allowed: 15 minutes

Use the following grid references in numerical order

2 SW 29655767 NW

1 SE 29675708

3 SSE 27516016 ENE

Stop and give ways (not in order) which you may visit in this section:

29265722 29675708 27516016 29655767 30055741

Drew Wilson

Clerk of the Course

Event emergency telephone number
078 707 40915

frizzante offsales

PREMIERTYRE
& WASH BAY

QUALITY
SERVICE
ASSURED

DRUMHARVEY SERVICE STATION

Dromore Road, Irvinestown, County Fermanagh. BT94 1ET.

Tel. (028) 6862 1226 | Fax. (028) 6862 8385 | Tyre/Carwash Dept. 0796 8806 664



McAleer's

SPAR

There for you

HOT FOOD • GROCERIES • FORECOURT • OFF-LICENCE • ATM • TYRES • CAR WASH

THE ENERGIA NORTHERN IRELAND NAVIGATION RALLY CHAMPIONSHIP 2009



ENNISKILLEN MOTOR CLUB LTD

ERNE SAFARI NAVIGATION RALLY 6 MARCH 2009

energia

ROUTE INSTRUCTION 12

CLASSES 3 & 4

From Control TC K NE 25285900 SW
To Control TC Finish 23855815
(inside Mahon's Hotel)

Length: 0.95 miles
Competitive relaxed section

Average speed:
Time allowed: 30 minutes

Go directly to TC Finish

NB if car park is full, there is adequate car parking in the public car park on the left, prior to the turn off into Mahon's Hotel car park. TC Finish is situated inside Mahon's Hotel. Please make sure you get a time recorded. There is no penalty for early arrival. Hand in Damage Declaration Form and thank you for competing tonight.

Petrol is available at McAleer's Spar (start venue 24455860) up to 00:30hrs.

Please support our sponsor

Drew Wilson

Clerk of the Course

Event emergency telephone number
078 707 40915

frizzante offsales

PREMIERTYRE
& WASH BAY

QUALITY
SERVICE
ASSURED

DRUMHARVEY SERVICE STATION

Dromore Road, Irvinestown, County Fermanagh. BT94 1ET.

Tel. (028) 6862 1226 | Fax. (028) 6862 8385 | Tyre/Carwash Dept. 0796 8806 664

